



• • • the passion for moving

M5



Tow



• • • the passion for moving

# M5

---



4.000 kg



5,5 km/h



15 %







# M5

*Industrial electric power pusher*

 4.000 kg     5,5 km/h     15 %

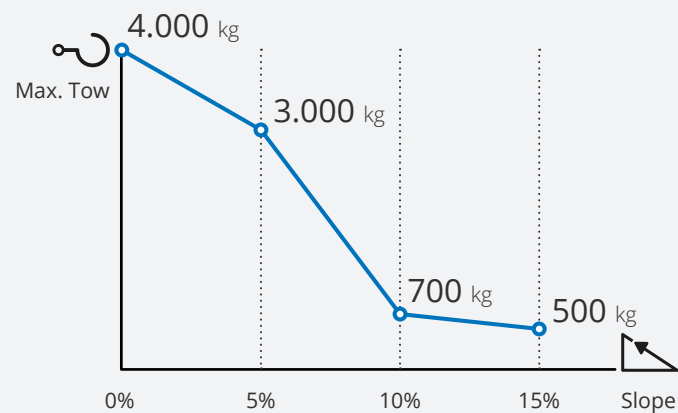
- for loads up to **4.000 kg**;
- **ATEX** and **IECEx** certifications available for use in potentially dangerous and explosive environments;
- with **pneumatic wheels** for indoor and outdoor use;
- **5-level speed** adjustment;
- wide range of **standard or customizable hitches** upon request.



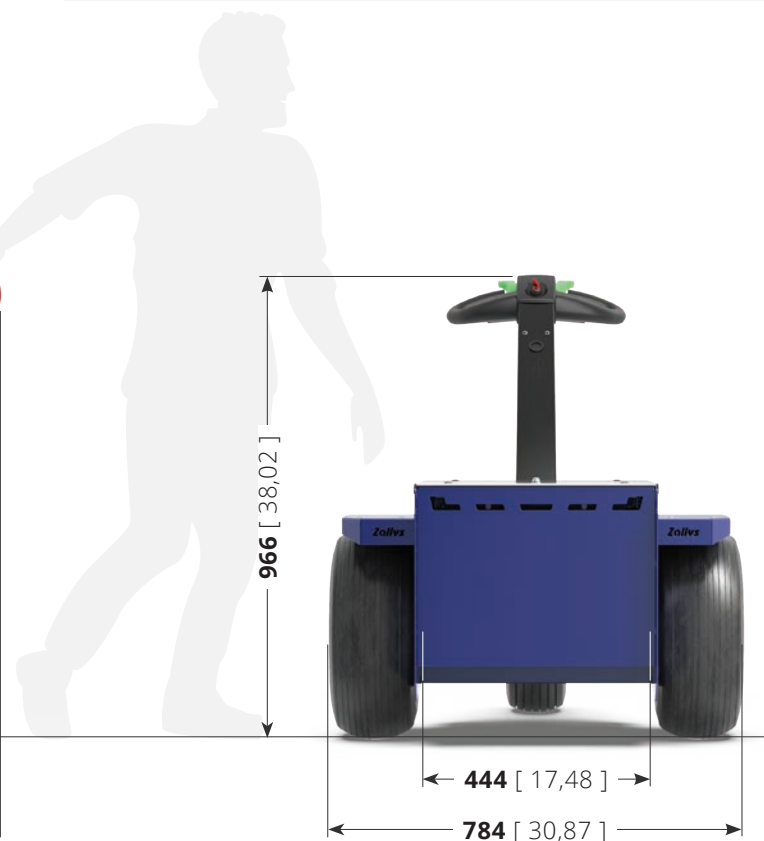
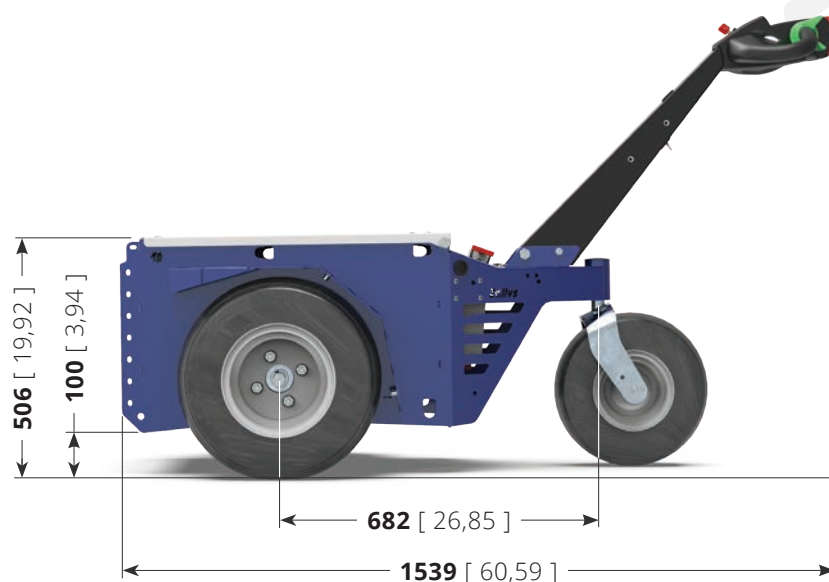
# Technical sheet

|                            |            |
|----------------------------|------------|
| Model name                 | M5         |
| Certification              | CE         |
| Tow capacity               | 4.000 kg   |
| Maximum speed              | 5,5 km/h   |
| Batteries                  | AGM 130 Ah |
| Weight (without batteries) | 90 kg      |
| Length                     | 1.539 mm   |
| Width                      | 784 mm     |
| Height                     | 966 mm     |
| Steering diameter          | 1,50 m     |

## Performances on slopes



While the hook force expressed in N remains unchanged, the towing capacity expressed in kg may vary based on: type of terrain on which towing is carried out, use or not of ballast and type of wheels mounted on the vehicle and trailer.



Unit:  
mm [inch]

# Ergonomic driving



**M5 tiller head** has been designed and built to make the use of the machine more ergonomic for the operator, ensuring the **right comfort for prolonged use** during the work shift. Its ergonomic design allows you to have **everything at your fingertips**.

The structure is made of resistant materials in case of accidental impacts.





# Guaranteed autonomy



M5 is equipped as standard with two **130Ah** batteries, which guarantee the machine an autonomy of **8 working hours with continuous use**.

The batteries are hermetic **AGM** and therefore **do not require maintenance**.



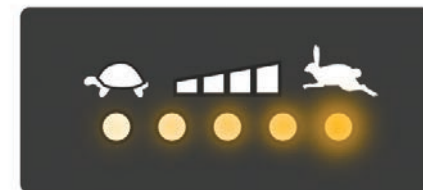
# 5 levels of speed

The **speed** of M5 is **adjustable on 5 levels**, to adapt the conduction based on the type of operation you are facing. The so-called *Flex-to-go* system, designed to be able to carry out **maneuvers in fewer steps** by reducing speed in tight spaces and **travel long distances more quickly** by accelerating on straights.



For each level the speed of the machine increases by 20%, according to this curve:

- 1<sup>st</sup> level: Speed at 20%;
- 2<sup>nd</sup> level: Speed at 40%;
- 3<sup>rd</sup> level: Speed at 60%;
- 4<sup>th</sup> level: Speed at 80%;
- 5<sup>th</sup> level: Maximum speed;



# Safety

Just like all Zallys vehicles, **M5** is equipped **as standard** with several systems to guarantee the **maximum safety** to the operator during use, helping to build a safe and productive work environment without risks of injuries or occupational diseases. The standard safety devices are:

- **Anti-crush button** on tillerhead;
- **Maintained action** controls;
- **Electrobrake** always active in absence of electrical current;
- Connector for the **interruption of power supply**.

Furthermore, the following **optional devices** are available as accessories:

- **LED rotating beacon**;
- **Protection** for pivoting wheel;
- Mushroom button for **emergency stop** on tillerhead;
- **Numeric keypad** instead of the key for turning on the machine.



## Modular ballasts

The **modular ballast system** of **M5** gives flexibility in increasing the performance of the machine: the single unit weighs just **9.5 kg**, so a single operator can add or remove weight as needed, without the need for external lifting systems. This avoids lifting excessive weights, thus eliminating the associated health risks.





# Connection hitches



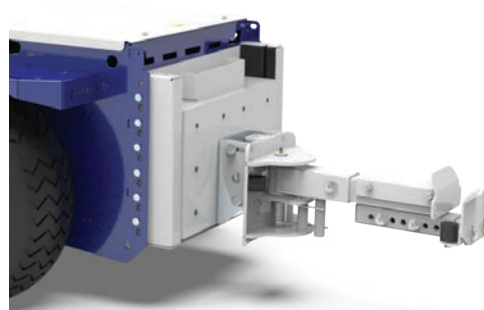
**M5** has a wide range of **connection hitches**, mechanical or electrical, to be versatile and suitable for numerous applications.



Drop pin hitch  
Ø16 / 20 / 35 / 40 mm



Multifunction hitch  
ball / drop pin



Roll-Box hitch



Hitch for trash bins

# Application examples

## Sectors of application:



INDUSTRIAL LOGISTICS



METALLURGICAL INDUSTRY



WASTE LOGISTICS



HOSPITALS



Metallurgical industry



Industrial Logistics



Industrial Maintenance



Waste logistics



Airports and Aviation



Hospitals

# Alternative versions

**M5** is available in the standard version or it is possible to request the modification for **ATEX** and **IECEX** certifications through specialized bodies.



## M5

*Standard version*

**M5** is ideal for moving wheel loads up to **4,000 kg** effortlessly and efficiently.



## M5 | ATEX

*ATEX and IECEX certifications*

Upon request, **M5** can be modified according to **ATEX** or **IECEX** directives (zones 1/21 and 1/22) for use in environments with potentially explosive dust and gases. The explosion-proof transformations and certification will be carried out through specialized bodies following their analysis and tests.





1996



...the passion for moving

2006



... the passion for moving

2016



[www.zallys.com](http://www.zallys.com)

**Contacts:**

[sales@zallys.com](mailto:sales@zallys.com)

+39 0445 366785

Zallys srl srl - Via Palazzina 1, Sarcedo 36030 (VI) - Italia