





Tow



• • • the passion for moving

# M12

---

 1.500 kg     5,0 km/h     15 %






# M12

*Vertical electric tug*

 1.500 kg

 5,0 km/h

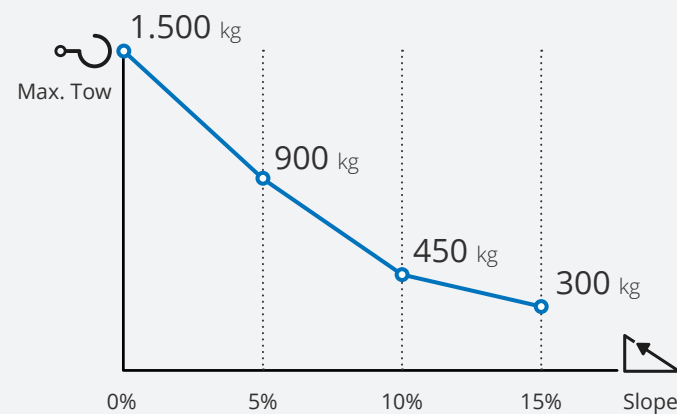
 15 %

- for loads up to **1.500 kg**;
- **versatile** and **compact**;
- 24/7 operation thanks to the **interchangeable battery pack**;
- **5-level speed** adjustment;
- wide range of **standard or customizable hitches** upon request.

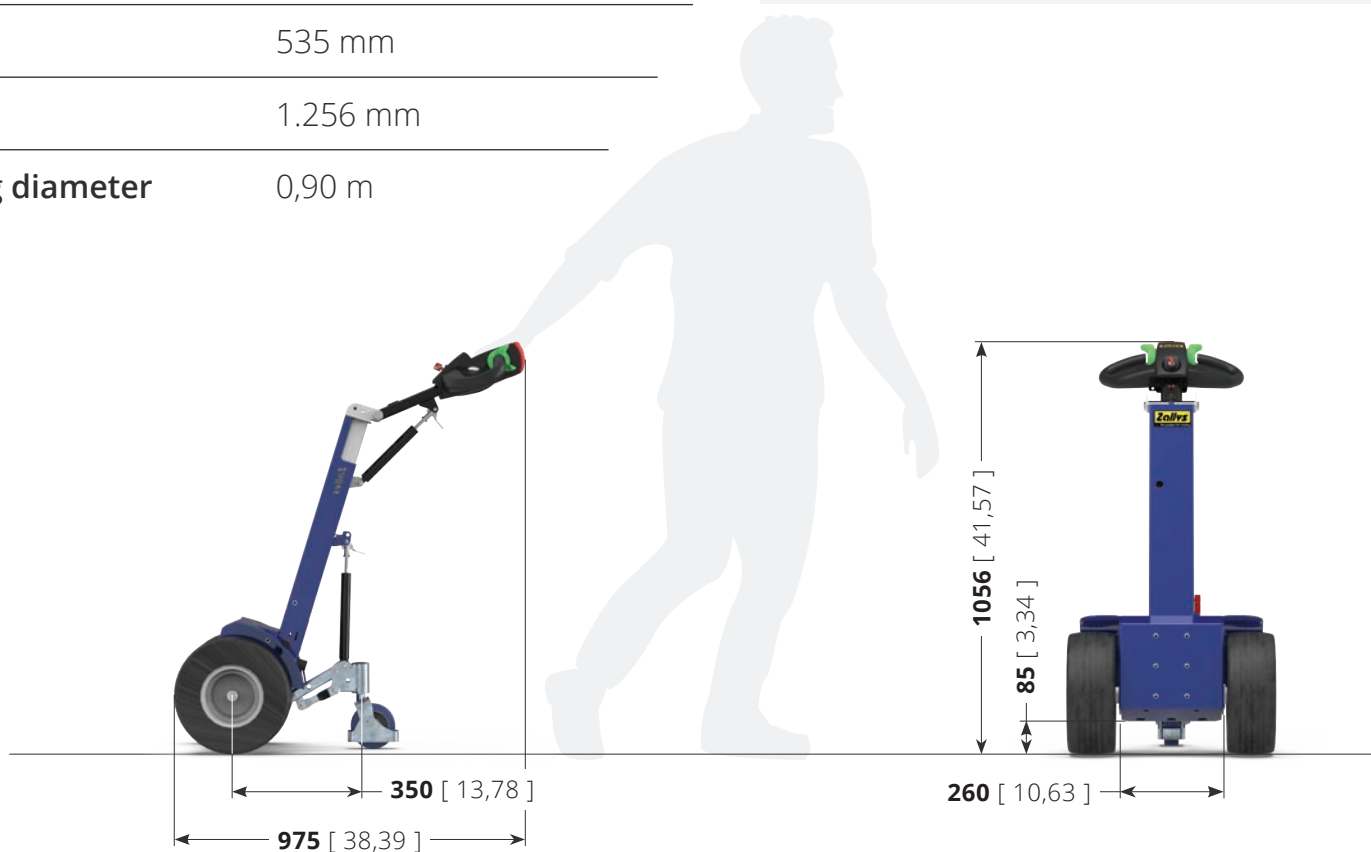
# Technical sheet

Model name	M12
Certification	CE
Tow capacity	1.500 kg
Maximum speed	5,0 km/h
Batteries	AGM 30 Ah / AGM 45 Ah
Weight (without batteries)	50 kg
Length	700 mm
Width	535 mm
Height	1.256 mm
Steering diameter	0,90 m

## Performances on slopes



While the hook force expressed in N remains unchanged, the towing capacity expressed in kg may vary based on: type of terrain on which towing is carried out, use or not of ballast and type of wheels mounted on the vehicle and trailer.



Unit:  
mm [inch]

# Ergonomic driving



**M12 tiller head** has been designed and built to make the use of the machine more ergonomic for the operator, ensuring the **right comfort for prolonged use** during the work shift. Its ergonomic design allows you to have **everything at your fingertips**.

The structure is made of resistant materials in case of accidental impacts.

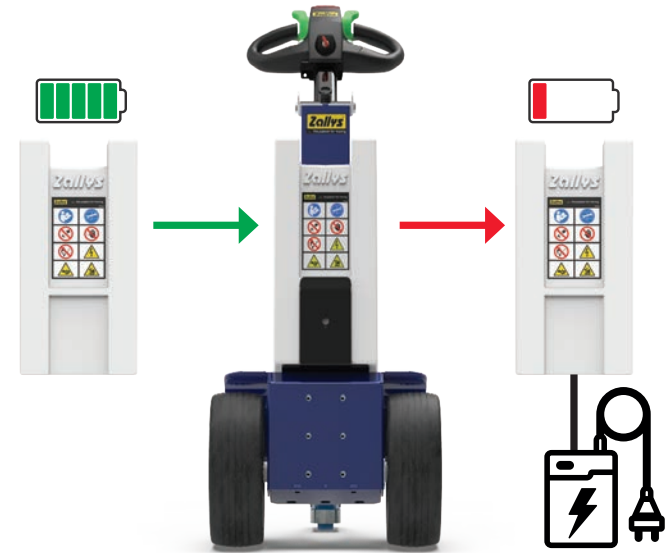


# 24/7 Operation



The battery packs are **light and easily interchangeable** so that they can cover **multiple work shifts**: when one runs out, it can be charged and immediately replaced with an already charged one, so **the machine will always be active**! This system is particularly important in the case of working over multiple shifts.

The batteries are **AGM** and therefore **do not require maintenance** and are protected by a robust shockproof double-chamber PE body. For this machine, they are available in **30 Ah** or **45 Ah**.



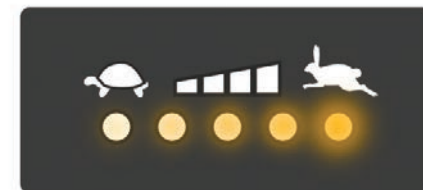
# 5 levels of speed



The **speed of M12 is adjustable on 5 levels**, to adapt the conduction based on the type of operation you are facing. The so-called *Flex-to-go* system, designed to be able to carry out **maneuvers in fewer steps** by reducing speed in tight spaces and **travel long distances more quickly** by accelerating on straights.

For each level the speed of the machine increases by 20%, according to this curve:

- 1<sup>st</sup> level: Speed at 20%;
- 2<sup>nd</sup> level: Speed at 40%;
- 3<sup>rd</sup> level: Speed at 60%;
- 4<sup>th</sup> level: Speed at 80%;
- 5<sup>th</sup> level: Maximum speed;



# Safety

Just like all Zallys vehicles, **M12** is equipped **as standard** with several systems to guarantee the **maximum safety** to the operator during use, helping to build a safe and productive work environment without risks of injuries or occupational diseases. The standard safety devices are:

- **Anti-crush button** on tillerhead;
- **Maintained action** controls;
- **Electrobrake** always active in absence of electrical current;
- Connector for the **interruption of power supply**.

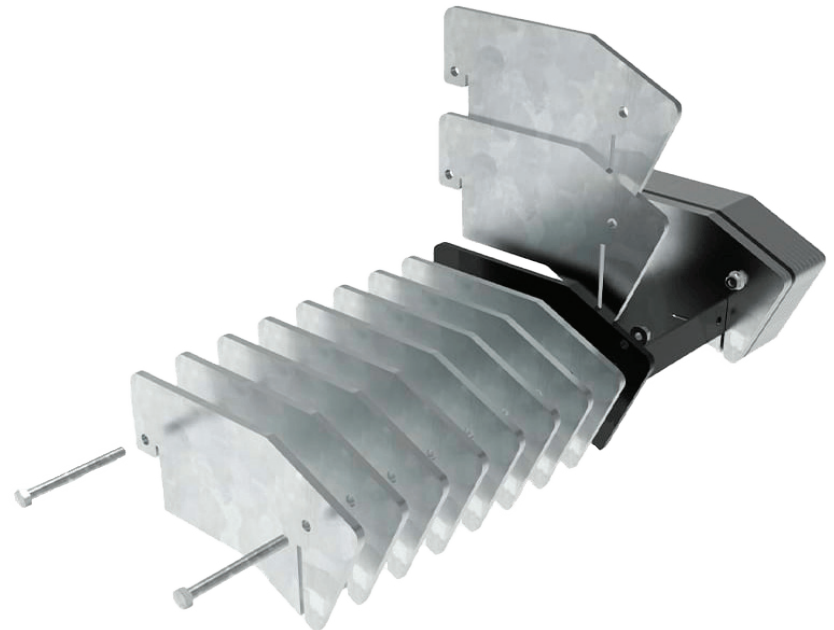
Furthermore, the following **optional devices** are available as accessories:

- **LED rotating beacon**;
- Mushroom button for **emergency stop** on tillerhead;
- **Numeric keypad** instead of the key for turning on the machine.



## Modular ballasts

The **modular ballast system** of **M12** gives flexibility in increasing the performance of the machine: the single unit weighs just **3 kg**, so a single operator can add or remove weight as needed, without the need for external lifting systems. This avoids lifting excessive weights, thus eliminating the associated health risks.



# Connection hitches



M12 has a wide range of **connection hitches**, mechanical or electrical, to be versatile and suitable for numerous applications.



Drop pin hitch




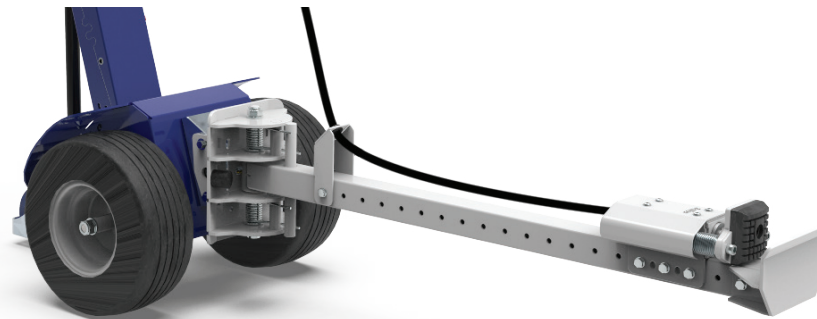
Multifunction hitch  
ball / drop pin




Roll-Box hitch



 Electric clamp hitch



 Hydraulic clamp hitch  
with manual pump



Hitch for trash bins

# Application examples

## Sectors of application:



INDUSTRIAL LOGISTICS



AUTOMOTIVE



MULTISERVICE



HOSPITALS



Metallurgical Industry 



Metallurgical Industry 



Plastic molding 



Multiservice 



Metallurgical Industry 



Textile Industry 

# Alternative versions

**M12** is available in the standard version or in the **AISI 316 stainless steel** version.



## M12

*Vertical electric tug*

**M12** represents the ideal solution for manual handling of loads even in the tightest spaces.



## M12 | AISI 316

*AISI 316 Stainless steel structure*

Upon request, **M1** can be built entirely in **AISI316 stainless steel**, to be used in particularly hard environments with corrosive agents or sea water, and in situations where high standards of hygiene and cleanliness are required, such as inside industries in the food or pharmaceutical sectors and in sterile rooms.



1996



...the passion for moving

2006



... the passion for moving

2016



[www.zallys.com](http://www.zallys.com)

**Contacts:**

[sales@zallys.com](mailto:sales@zallys.com)

+39 0445 366785

Zallys srl srl - Via Palazzina 1, Sarcedo 36030 (VI) - Italia