





Man on board



• • • the passion for moving

S1



12,0 km/h



1.500 kg



500 kg





S1

Electric tractor for logistic



12,0 km/h



1.500 kg

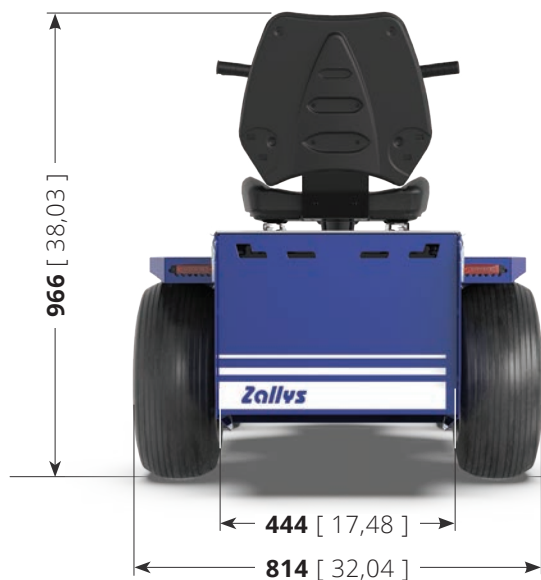


500 kg

- to tow carts up to **1.500 kg** and transport loads up to **500 kg**;
- **ATEX** and **IECEx** certifications available for use in potentially dangerous and explosive environments;
- **pneumatic wheels** for indoor and outdoor use;
- operative autonomy for **8 working hours of continuous use**;
- **5-level speed** adjustment;
- **standard or customizable accessories** upon request.

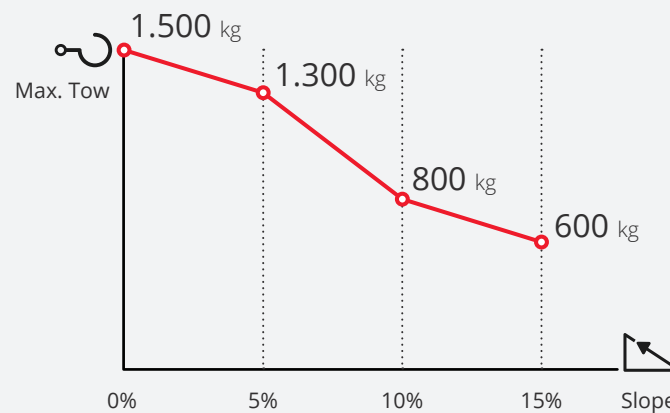
Technical sheet

Model name	S1
Certification	CE
Tow capacity	1.500 kg
Load capacity	500 kg
Maximum speed	12,0 km/h
Batteries	AGM 240 Ah
Weight (without batteries)	167 kg
Length	1.611 mm
Width	814 mm
Height	966 mm
Steering diameter	3,60 m



Unit:
mm [inch]

Performances on slopes



While the hook force expressed in N remains unchanged, the towing capacity expressed in kg may vary based on: type of terrain on which towing is carried out, use or not of ballast and type of wheels mounted on the vehicle and trailer.

Ergonomic driving



The **handlebar** of **S1** is designed to make the operator's use of the machine more ergonomic, guaranteeing the **right comfort for prolonged use** during the work shift. **The control and safety tools are all within easy reach**, and the LED display always shows the remaining battery charge and the direction of travel; the key is on the right side for quick and convenient ignition. The **structure** is made of **resistant materials** in case of accidental impacts.

*Electronic
emergency brake*

*Button for
turning on the light*

Accelerator

*Diverter for
direction of travel*

LED display

Horn button

Speed selection button

Ignition key



Guaranteed autonomy



S1 is equipped as standard with four **240 Ah** batteries, which guarantee the machine an autonomy of **8 working hours with continuous use**.

The batteries are hermetic **AGM** and therefore **do not require maintenance**.



5 levels of speed

The **speed** of **S1** is **adjustable on 5 levels**, to adapt the conduction based on the type of operation you are facing. The so-called *Flex-to-go* system, designed to be able to carry out **maneuvers in fewer steps** by reducing speed in tight spaces and **travel long distances more quickly** by accelerating on straights.



For each level the speed of the machine increases by 20%, according to this curve:

- 1st level: Speed at 20%;
- 2nd level: Speed at 40%;
- 3rd level: Speed at 60%;
- 4th level: Speed at 80%;
- 5th level: Maximum speed;



Safety

Just like all Zallys vehicles, **S1** is equipped **as standard** with several systems to guarantee the **maximum safety** to the operator during use, helping to build a safe and productive work environment without risks of injuries or occupational diseases. The standard safety devices are:

- Seat with **deadman sensor**;
- **Mechanical pedal brake**;
- **Electronic lever brake**;
- Connector for the **interruption of power supply**;
- **Front and rear lights**.

Furthermore, the following **optional devices** are available as accessories:

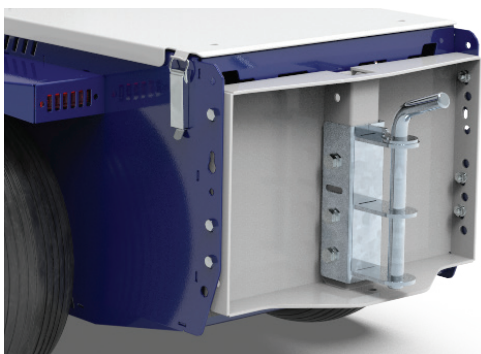
- **Safety seat belts**;
- **LED flashing light**.



Tow



S1 can tow different types of trailers thanks to the practical multifunctional hook with ball, drop pin or pin attachment. Suitable for trailers with eyelet drawbar, trailer coupling and spring drawbar.



Drop pin hitch
Ø 16 / 20 / 35 / 40 mm



Multifunction hitch
ball / drop pin

Transport



In addition to the towing function, **S1** can be equipped with a spacious 730 x 730 x 220 mm basket to transport material weighing up to **500 kg**.



Application examples

Sectors of application:



INDUSTRIAL LOGISTICS



MULTISERVICE



AIRPORTS AND AVIATION



HOSPITALS



Multiservice



Multiservice



Multiservice



Airports and Aviation



Industrial Logistics



Plant Nurseries

Alternative versions

S1 is available in the standard version or in the **L** version, to transport bulkier loads.



S1

Standard version

S1 is the ideal solution to eliminate manual handling of loads and speed up personnel movements, while increasing safety. Multifunctional vehicle suitable for numerous applications.



S2

Longer frame

S2 is a larger version of **S1**. It has the same performances of the standard version, and is **400 mm longer**; this feature makes it an extremely versatile vehicle, suitable both for towing trolleys and for transporting material on a loading platform as well as, of course, for agile and comfortable movement of personnel.



1996



...the passion for moving

2006



... the passion for moving

2016



www.zallys.com

Contacts:

sales@zallys.com

+39 0445 366785

Zallys srl srl - Via Palazzina 1, Sarcedo 36030 (VI) - Italia