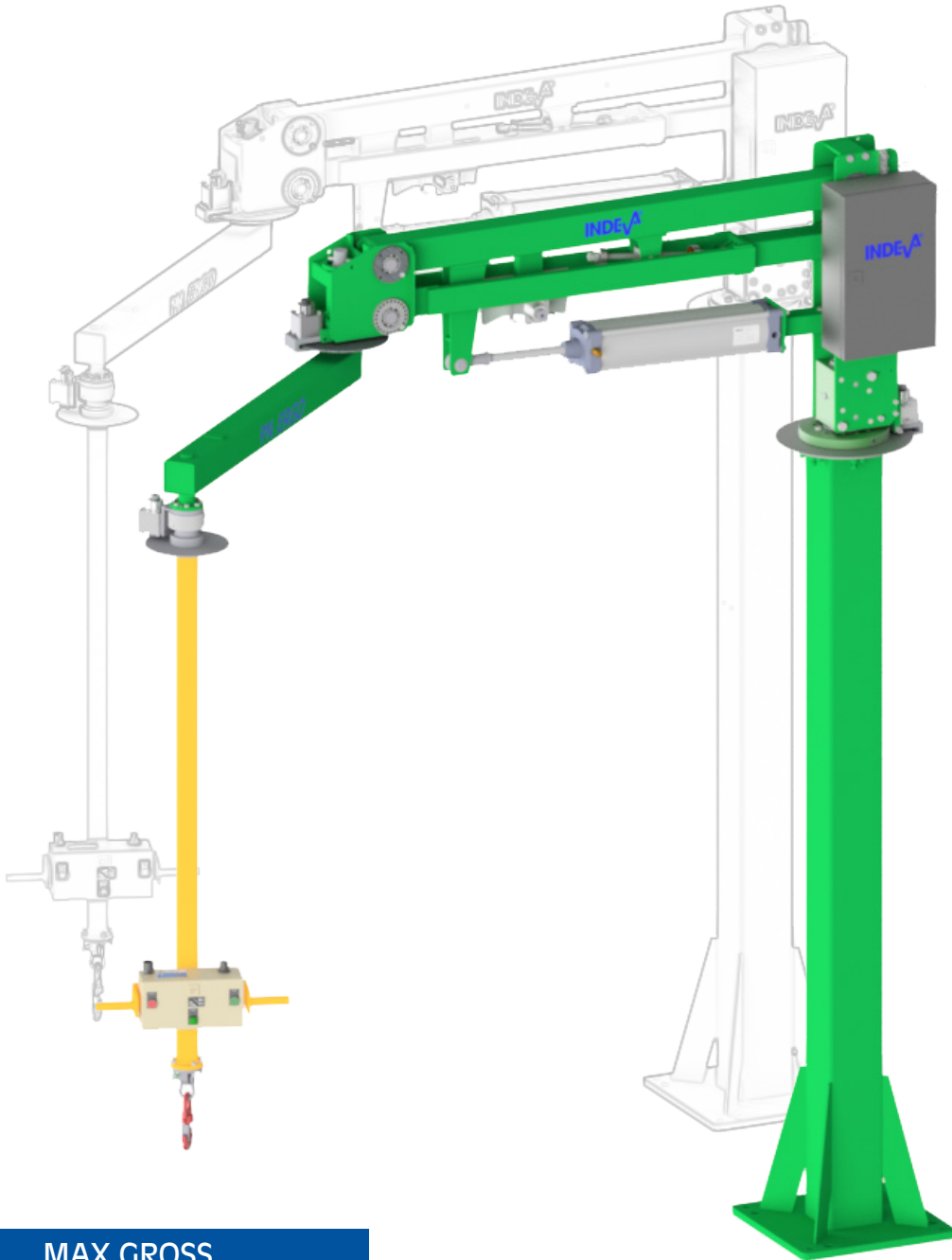


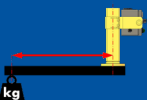
PN SERIES: PN80 COLUMN MOUNTED



MAX GROSS
CAPACITY
UP TO 110 kg



VERTICAL
STROKE
MAX 1.75 m



OFF-SET
LOADS

INDEVA[®]

INTELLIGENT DEVICES FOR HANDLING

PN SERIES: PN80 COLUMN MOUNTED

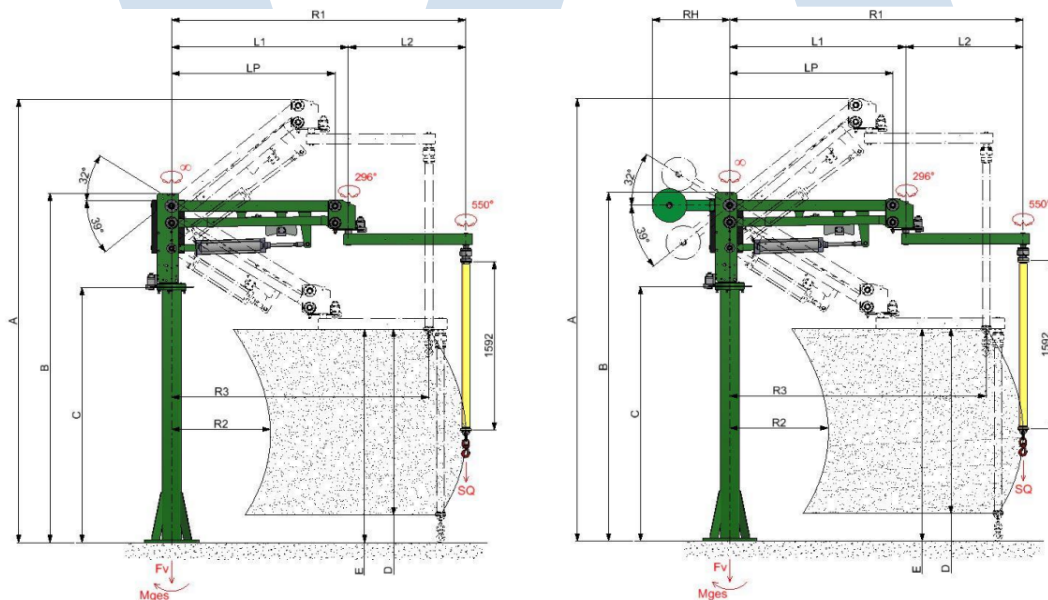
Model		PN80CM	
Counterweights		NO	YES
SQ⁽¹⁾ (Max Load capacity)	kg	80	110
Min Load Capacity	kg	10	10
Misaligned loads	-	YES	YES
LP	mm	1500	1500
L1	mm	1620	1620
L2*	mm	1080	1080
R1*	mm	2700	2700
R2*	mm	907	907
R3*	mm	2361	2361
RH	mm	-	715
A⁽²⁾	mm	4190	4190
B⁽²⁾	mm	3300	3300
C⁽²⁾	mm	2410	2410
D Vertical stroke	mm	1751	1751
E⁽²⁾	mm	2005	2005
Weight (with column and load)	kg	450	590
Fv max⁽³⁾	daN	515	675
Mges max⁽³⁾	daNm	490	515

(1) Maximum load capacity SQ on the hook with standard tooling and with a compressed air supply of minimum 0.65 MPa (6.5 bar).

(2) Within certain limits, these values can be modified to suit specific requirements.

(3) Values including the relevant safety factor, according to UNI EN 13001.

* Most common configurations. Other arm lengths available, all values change accordingly.



GENERAL SPECIFICATIONS

- Air pressure 0,65 MPa (6,5 bar)
- Noise level < 70 dB(A)
- Lifting speed max 30 m/min
- Main joint axis brake
- Middle joint axis brake
- Continuous rotation on main joint
- Tool axis rotation 550°
- Slow descent in case of pressure failure
- Load balancing: standard, 1 load preset
- Flow rate during the lifting phase: 600 NI/min
- Compressed air consumption: 35 NI for one complete stroke at maximum load
- Base plate size: 500 mm x 500 mm
- Colors: green - RAL 6018; yellow - RAL 1018
- Floor levelling required: ± 2 mm/m

Due to continuous product improvement, these specifications may change without notice.

This document is property of INDEVA S.p.A.; any partial or full reproduction without written authorization by the owner is prohibited.

Compliance with the following directives:

- Essential safety requirements provided by Directive 2006/42/EC;
- Electrical Equipment - Electromagnetic Compatibility (EMC) Directive 2014/30/EU.

AVAILABLE OPTIONS

- Brake for up/down movement
- Pression booster
- Special painting
- Steel platform
- Lifting height limiter stop
- Main joint rotation block
- Middle joint rotation block
- Top joint brake
- Working area sensor on main and middle joint
- Continuous swivel joint on top joint
- Load balancing: adjustment system for different load weights

WORKING ENVIRONMENT REQUIREMENTS

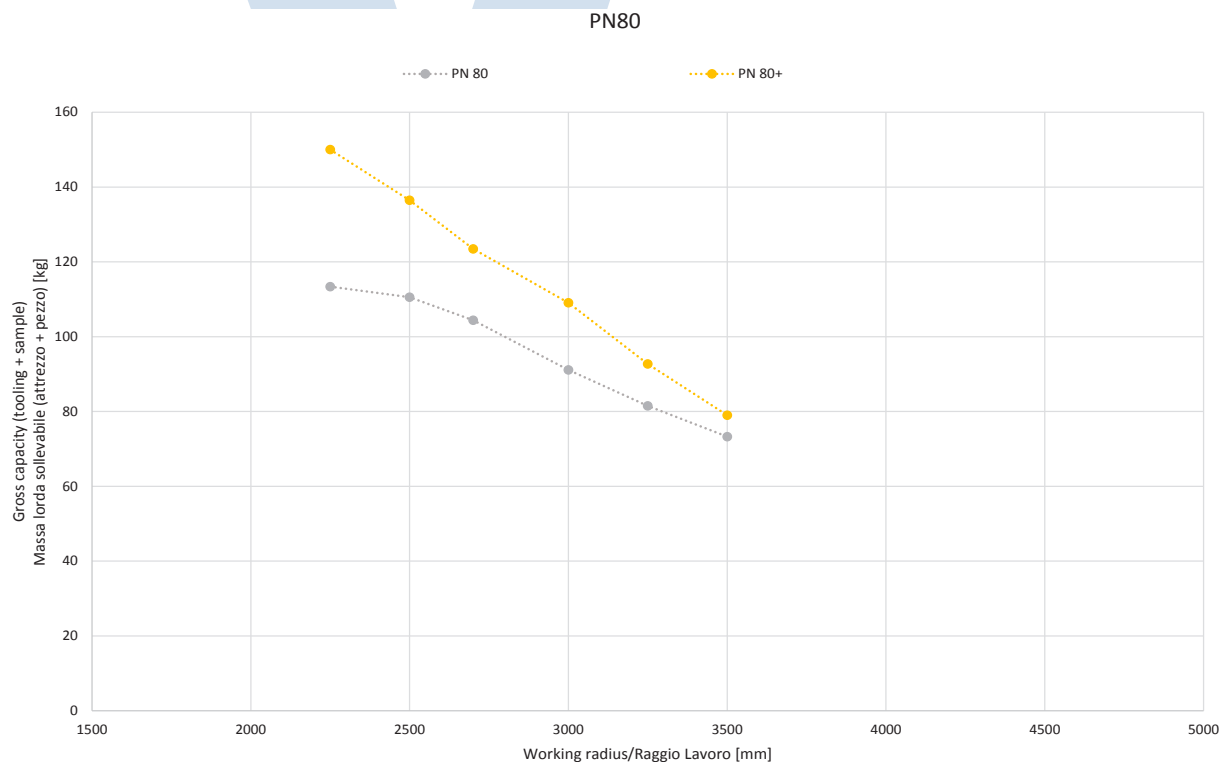
- **Relative humidity rate:** from 30% to 90% \pm 5%
- **Working temperature** 5 to 50 °C
- **Working environment:** the system must be located indoor away from outdoor elements

SAFETIES

(when assembled with tooling)

- Load loss detection;
- The system generates warning (without stopping the balancer) in order to show "out of range" working situations;
- Limitation system for the up / down lifting speed

CONFIGURATION CHART



Due to continuous product improvement, these specifications may change without notice.

This document is property of INDEVA S.p.A.; any partial or full reproduction without written authorization by the owner is prohibited.