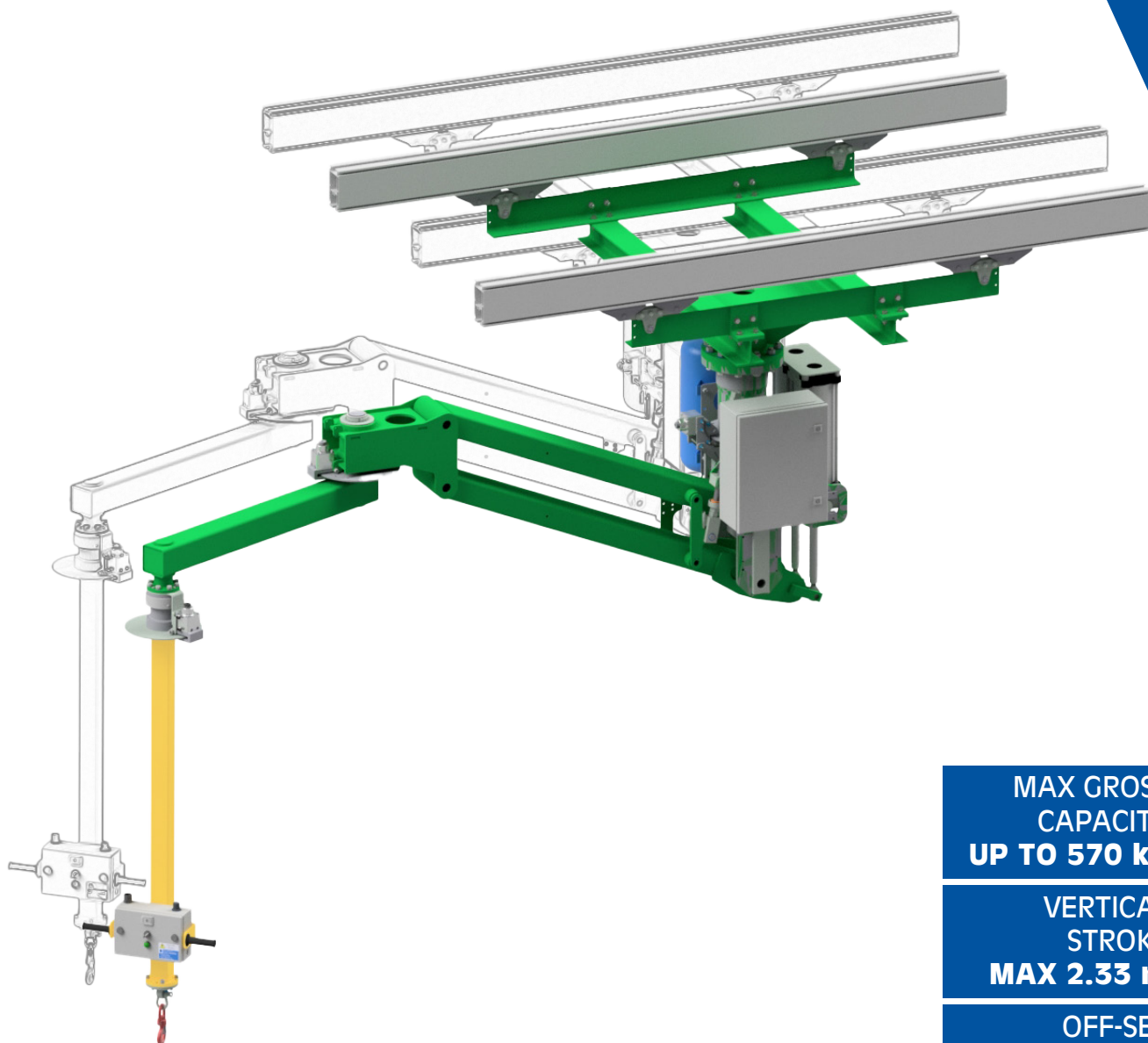


# LIFTRONIC® AIR - RAIL MOUNTED 400



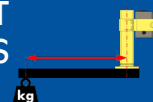
MAX GROSS  
CAPACITY  
**UP TO 570 kg**



VERTICAL  
STROKE  
**MAX 2.33 m**



OFF-SET  
LOADS



## LIFTRONIC® AIR - RAIL MOUNTED 400

Model		LA400S				
Type		XS*	S	M	L	XL**
<b>SQ<sup>(1)</sup> (Max Load capacity)</b>	<b>kg</b>	<b>570</b>	<b>530</b>	<b>400</b>	<b>310</b>	<b>235</b>
<b>Min Load capacity</b>	kg	15	15	15	15	15
<b>Misaligned loads</b>	-	<b>YES</b>	<b>YES</b>	<b>YES</b>	<b>YES</b>	<b>YES</b>
<b>LP</b>	mm	1000	1250	1500	1750	2000
<b>L1</b>	mm	1345	1595	1845	2095	2345
<b>L2</b>	mm	655	905	1155	1405	1655
<b>R1</b>	mm	2000	2500	3000	3500	4000
<b>R2</b>	mm	932	1058	1194	1337	1485
<b>R3</b>	mm	1812	2265	2718	3172	3625
<b>A<sup>(2)</sup></b>	mm	4161	4307	4453	4599	4875
<b>B<sup>(2)</sup></b>	mm	1711	1711	1711	1711	1841
<b>C<sup>(2)</sup></b>	mm	270	270	270	270	400
<b>D Vertical stroke</b>	mm	1167	1458	1750	2042	2333
<b>E<sup>(2)</sup></b>	mm	2010	2010	2010	2010	2010
<b>Weight (with column and load)</b>	kg	1325	1300	1190	1120	1080
<b>Fv max<sup>(3)</sup></b>	daN	1510	1490	1360	1280	1225
<b>Mges max<sup>(3)</sup></b>	daNm	1585	1890	1850	1820	1770

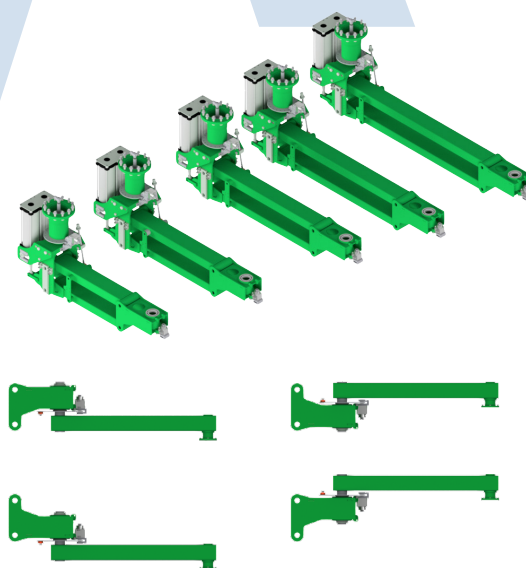
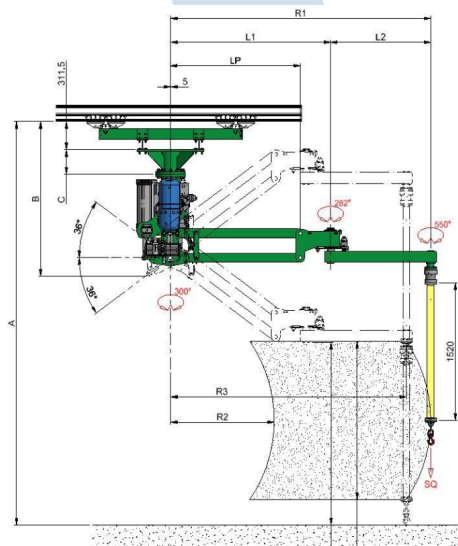
(1) Maximum load capacity SQ on the hook with standard tooling and with a compressed air supply of minimum 0.65 MPa (6.5 bar)

(2) Within certain limits, these values can be modified to suit specific requirements

(3) Values including the relevant safety factor, according to UNI EN 13001

\* Hoist mode only

\*\* Subject to approval by our engineers



## GENERAL SPECIFICATIONS

- Air pressure 0,65 MPa (6,5 bar)
- Power supply 115/230V A/C 50 ÷ 60Hz
- Power consumption 100VA
- Enclosure protection IP54
- Noise level < 70 dB(A)
- Lifting speed max 30 m/min
- Main joint axis brake
- Middle joint axis brake
- Column rotation 360°
- Tool axis rotation 550°
- Slow descent in case of pressure failure
- Balancing type: automatic weight detect & balancing
- Flow rate during the lifting phase: 1300 NI/min
- Compressed air consumption: 118,7 NI for one complete stroke at maximum load
- Mounting plate size: 770 mm x 770 mm
- Colors: green - RAL 6018; yellow - RAL 1018
- Floor levelling required: ± 2 mm/m
- Fixing requirements: n°8 M16 bolts (8.8 class)

Due to continuous product improvement, these specifications may change without notice.

This document is property of INDEVA S.p.A.; any partial or full reproduction without writtten authorization by the owner is prohibited.

**Applicable standards:**

- Essential safety requirements provided by Directive 2006/42/EC;
- Electrical Equipment - Electromagnetic Compatibility (EMC) Directive 2014/30/EU.

**AVAILABLE OPTIONS**

- Brake for up/down movement
- Pression booster
- Special painting
- Sliding trolley
- Lifting height limiter stop
- Main joint rotation block
- Middle joint rotation block
- Top joint brake
- Working area sensor on main and middle joint

**WORKING ENVIRONMENT CONDITIONS**

- **Relative humidity rate:** from 30% to 90%  $\pm$  5%
- **Working temperature** 5 to 50 °C
- **Working environment:** the system must be located indoor away from outdoor elements

**SAFETIES**

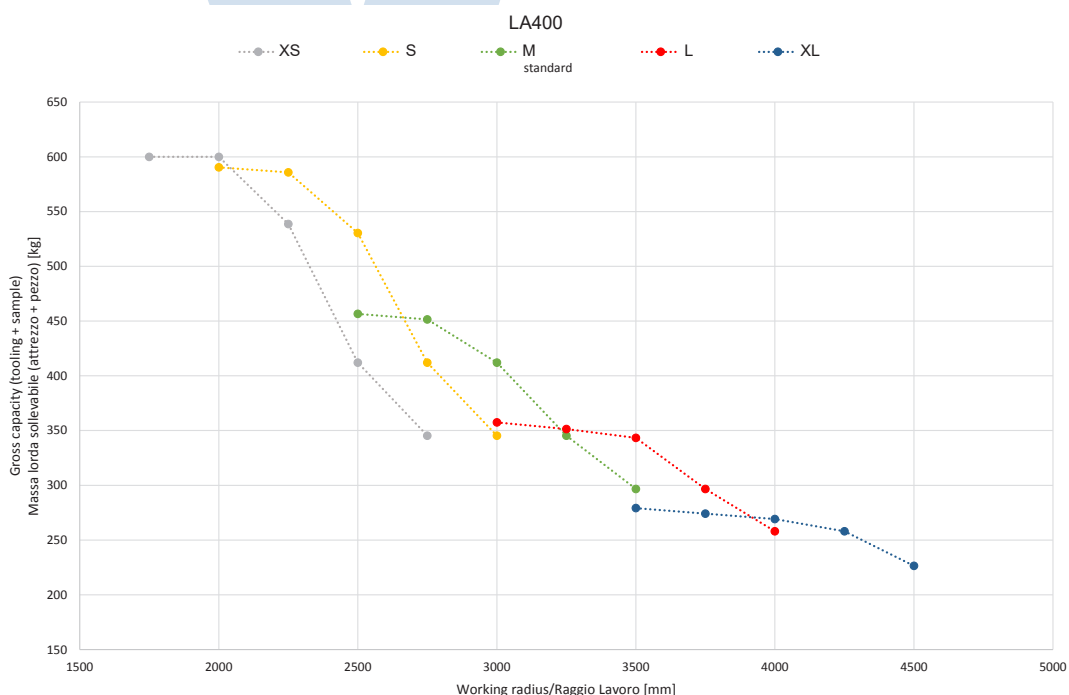
(when assembled with tooling)

**The system stops automatically when:**

- A communication error is detected (fault inside the cables, fault inside an electronic board...);
- Electric power supply switches off;
- A fault inside the proportional electric valve is detected;
- A fault inside the proportional pneumatic valve is detected;
- The cylinder pressure is not congruent with required pressure;
- The STOP button is pressed

**Other safeties:**

- Load loss detection;
- The system generates warning (without stopping the balancer) in order to show "out of range" working situations;
- Maximum lifting load limitation by electronic control.

**CONFIGURATION CHART**


Due to continuous product improvement, these specifications may change without notice.

This document is property of INDEVA S.p.A.; any partial or full reproduction without written authorization by the owner is prohibited.