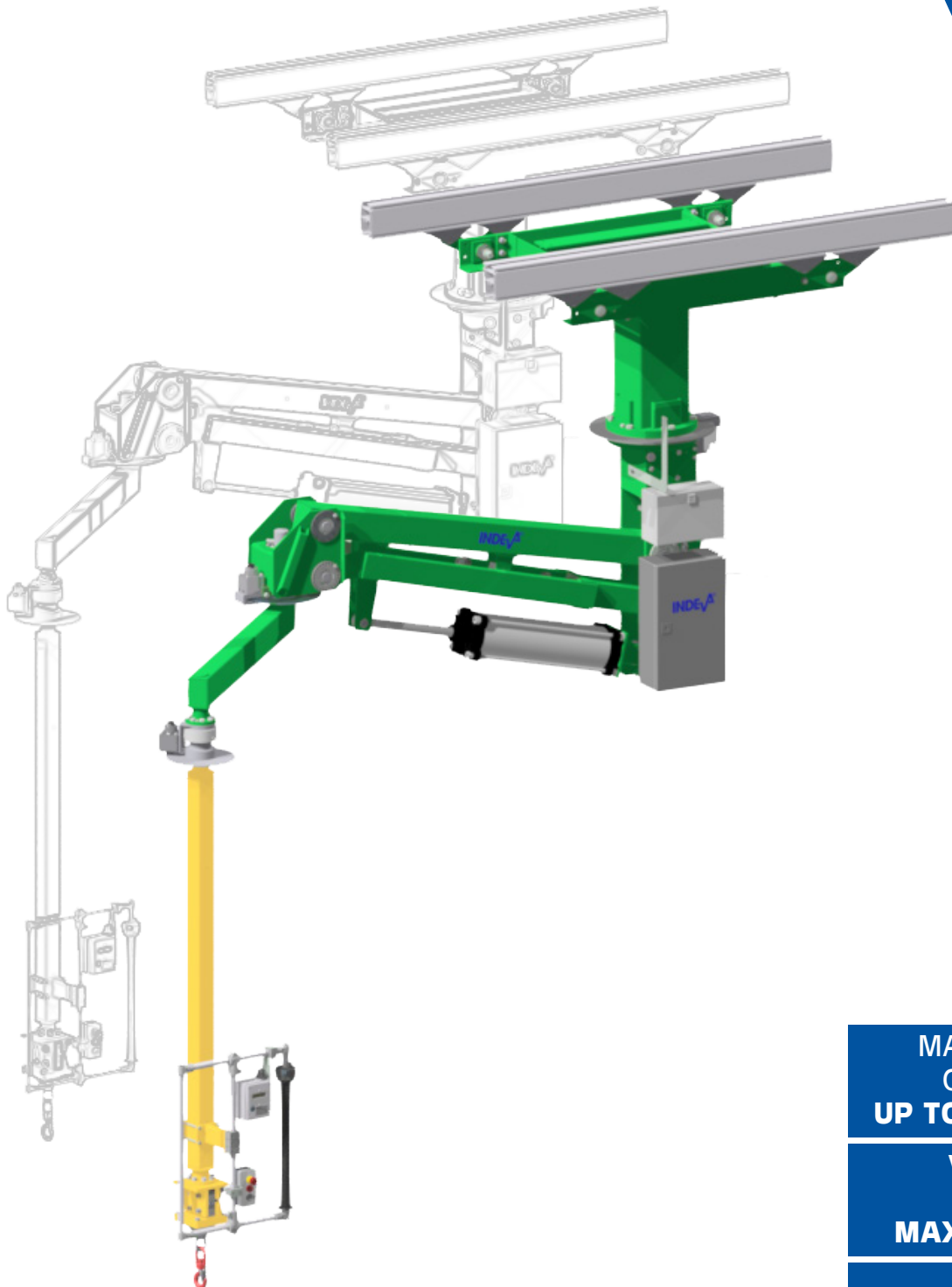


LIFTRONIC® AIR - CEILING/RAIL MOUNTED 160



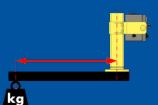
MAX GROSS
CAPACITY
UP TO 210 kg



VERTICAL
STROKE
MAX 2.28 m



OFF-SET
LOADS



INDEVA®

INTELLIGENT DEVICES FOR HANDLING

LIFTRONIC® AIR - CEILING/RAIL MOUNTED 160

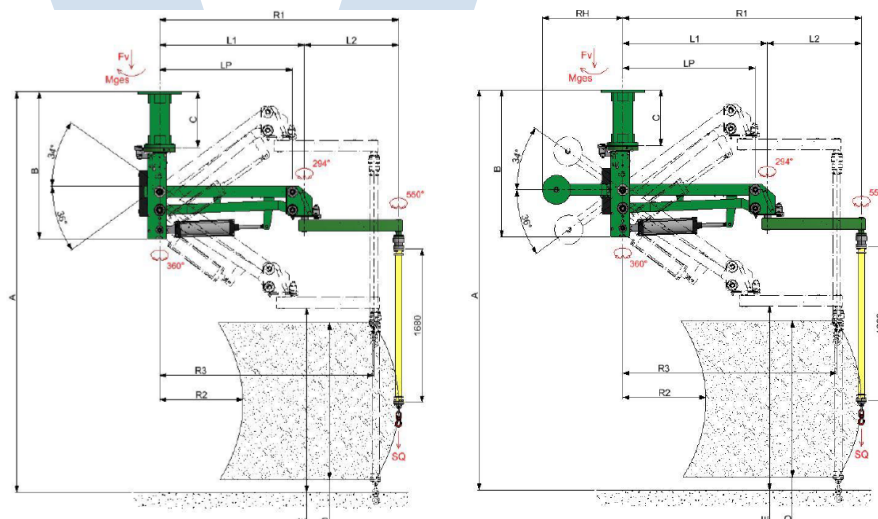
Model		LA160SM (std)		LA160SL	
Counterweights		NO	YES	NO	YES
SQ⁽¹⁾ (Max Load capacity)	kg	160	210	75	120
Mid load capacity	kg	12	12	12	12
Misalignd loads	-	YES	YES	YES	YES
LP	mm	1500	1500	2000	2000
L1	mm	1635	1635	2135	2135
L2 *	mm	1065	1065	1365	1365
R1 *	mm	2700	2700	3500	3500
R2 *	mm	942	942	1238	1238
R3 *	mm	2421	2421	3127	3127
RH	mm	-	910	-	910
A⁽²⁾	mm	4388	4388	4876	4876
B⁽²⁾	mm	1614	1614	1802	1802
C⁽²⁾	mm	610	610	800	800
D Vertical stroke	mm	1716	1716	2289	2289
E⁽²⁾	mm	2016	2016	2036	2036
Weight (with column and load)	kg	605	800	560	750
Fv max⁽³⁾	daN	700	915	642	855
Mges max⁽³⁾	daNm	845	885	800	865

(1) Maximum load capacity SQ on the hook with standard tooling and with a compressed air supply of minimum 0.65 MPa (6.5 bar).

(2) Within certain limits, these values can be modified to suit specific requirements.

(3) Values including the relevant safety factor, according to UNI EN 13001.

* Most common configurations. Other arm lengths available, all values change accordingly.



GENERAL SPECIFICATIONS

- Air pressure 0,65 MPa (6,5 bar)
- Power supply 115/230V A/C 50 ÷ 60Hz
- Power consumption 100VA
- Enclosure protection IP54
- Noise level < 70 dB(A)
- Lifting speed max 30 m/min
- Main joint axis brake
- Middle joint axis brake
- Column rotation 360°
- Tool axis rotation 550°
- Slow descent in case of pressure failure
- Balancing type: automatic weight detect & balancing
- Flow rate during the lifting phase: 1050 NI/min
- Compressed air consumption: 62 NI for one complete stroke at maximum load
- Mounting plate size: 500 mm x 500 mm
- Colors: green - RAL 6018; yellow - RAL 1018
- Floor levelling required: ± 2 mm/m
- Fixing requirements: n°8 M16 bolts (8.8 class)

Due to continuous product improvement, these specifications may change without notice.

This document is property of INDEVA S.p.A.; any partial or full reproduction without written authorization by the owner is prohibited.

Applicable standards:

- Essential safety requirements provided by Directive 2006/42/EC;
- Electrical Equipment - Electromagnetic Compatibility (EMC) Directive 2014/30/EU.

AVAILABLE OPTIONS

- Brake for up/down movement
- Pression booster
- Special painting
- Sliding trolley
- Lifting height limiter stop
- Main joint rotation block
- Middle joint rotation block
- Top joint brake
- Working area sensor on main and middle joint

WORKING ENVIRONMENT CONDITIONS

- **Relative humidity rate:** from 30% to 90% $\pm 5\%$
- **Working temperature** 5 to 50 °C
- **Working environment:** the system must be located indoor away from outdoor elements

SAFETIES

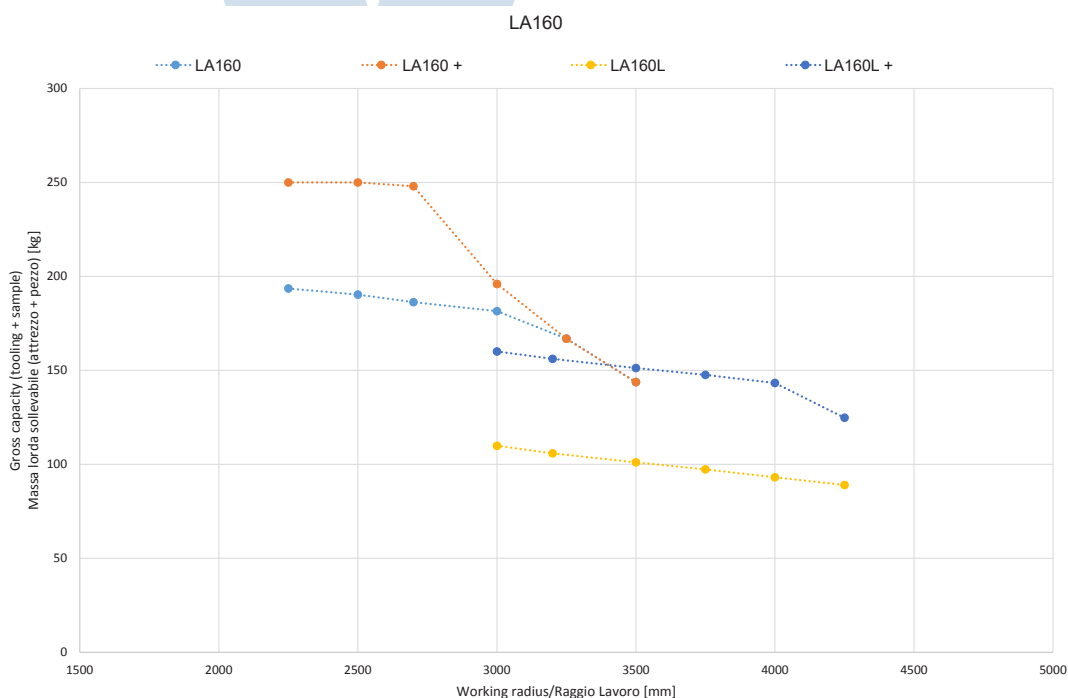
(when assembled with tooling)

The system stops automatically when:

- A communication error is detected (fault inside the cables, fault inside an electronic board...);
- Electric power supply switches off;
- A fault inside the proportional electric valve is detected;
- A fault inside the proportional pneumatic valve is detected;
- The cylinder pressure is not congruent with required pressure;
- The STOP button is pressed

Other safeties:

- Load loss detection;
- The system generates warning (without stopping the balancer) in order to show "out of range" working situations;
- Maximum lifting load limitation by electronic control.

CONFIGURATION CHART

Due to continuous product improvement, these specifications may change without notice.

This document is property of INDEVA S.p.A.; any partial or full reproduction without written authorization by the owner is prohibited.